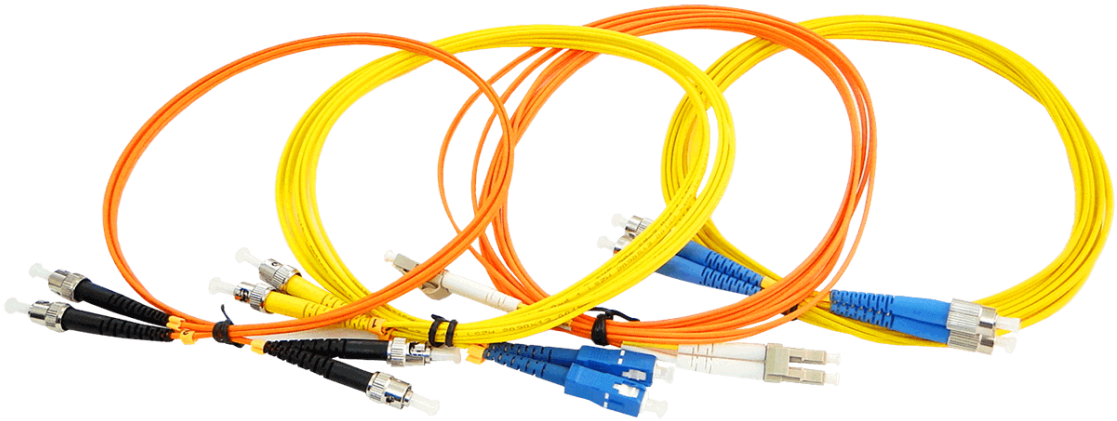


## Patch Cord



### FEATURES

- ❖ High precision alignment
- ❖ Comply with ROHS
- ❖ Material comply with requirement of UL 94V-0
- ❖ Compact and precision housing for retention

### Technical specification:

Fiber Type	SM			MM
Cable Diameter (mm)	Ø 0.9, Ø 0.2, Ø 0.3			
End -Face Finishing	PC	UPC	APC	PC
Insertion Loss(dB)	≤ 0.30			
Return Loss(dB)	≥ 50	≥ 55	≥ 60	≥ 28
Operating Wavelength (nm)	1310, 1550			
Exchangeability (dB)	≤ 0.20			
Repeatability (dB)	≤ 0.10			
Operating Temperature	-40 ~ +75°C			
End Face Geometry	ROC: 10-25 (PC/OPC) 5-12 (APC) Offset: 0 -50nm Fiber Height: -100 to +100nm Angle: 8 ± 0.3 (APC)			